



# GAT MONTHLY MEMBERSHIP PROGRESS REPORT

Results as of: 5/31/2023

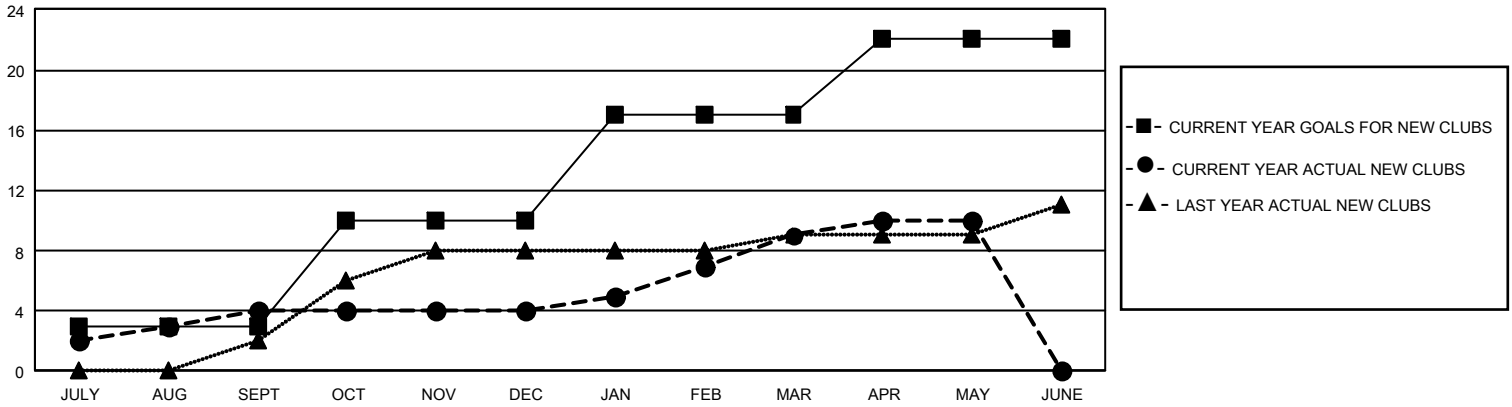
## GMT Constitutional Area 2, Group B

REPORT DOES NOT INCLUDE CLUBS IN UNDISTRICTED AREAS.

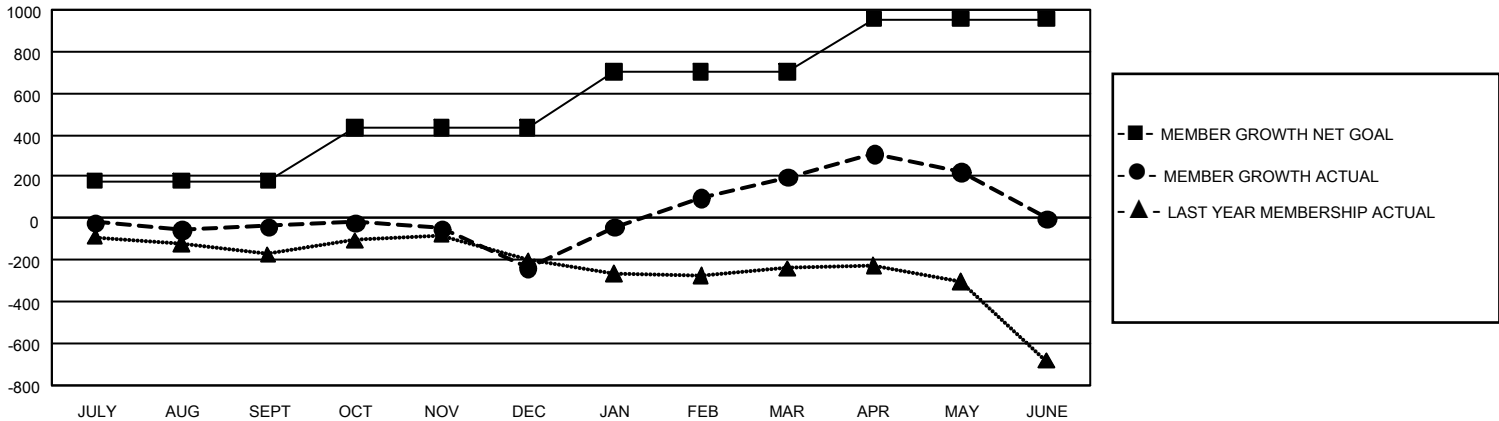
Clubs			
RESULTS FOR 2022-2023			
QUARTER	NEW CLUB GOAL	NEW CLUBS	DROPPED CLUBS
JULY/AUG/SEPT	9	4	4
OCT/NOV/DEC	21	0	6
JAN/FEB/MAR	21	5	2
APR/MAY/JUNE	15	1	1

Members			
RESULTS FOR 2022-2023			
QUARTER	MEMBER GROWTH NET GOAL	MEMBER GROWTH ACTUAL	DROPPED MEMBERS ACTUAL (including transfers)
JULY/AUG/SEPT	180	424	403
OCT/NOV/DEC	255	610	744
JAN/FEB/MAR	270	909	406
APR/MAY/JUNE	250	476	402

GOALS AND ACTUAL NEW CLUBS CUMULATIVE



GOALS AND ACTUAL MEMBERS CUMULATIVE



<b>DROPPED CLUBS: 13</b>	466 CLUBS OF 702 ADDED 1 OR MORE NEW MEMBERS	<b><u>GENDER DISTRIBUTION</u></b>	
		MALE 10,083 (62.46%) FEMALE 6,059 (37.53%) NON BINARY 0 (0.00%) PREFER NOT TO ANSWER 1 (0.01%)	
<b><u>DROPPED MEMBERS</u></b>		<a href="#">CLICK HERE FOR CUMULATIVE MEMBERSHIP DATA</a>	TOTAL FAMILY UNIT MEMBERS 3,009
DECEASED 271 CLUB CANCELLED 9 OTHER 1,675 <b>TOTAL 1,955</b>	FAMILY MEMBERS PAYING HALF DUES 1,555		